

HP4883 -UN-01JAN94



JOHN DEERE 9600 MAXIMIZER™ COMBINE WITH 900 SERIES CUTTING PLATFORM

(1989- )

(SPECIFICATIONS AND DESIGN SUBJECT TO CHANGE WITHOUT NOTICE)

## NOTE

FOR 900 SERIES PLATFORM PARTS INFORMATION, REFER TO JOHN DEERE 900 SERIES PLATFORM PARTS CATALOG - PC-2104.

FOR 40 SERIES CORN HEAD PARTS INFORMATION, REFER TO JOHN DEERE 40 SERIES CORN HEAD PARTS CATALOG - PC-1223.

FOR 50A SERIES ROW-CROP HEAD PARTS INFORMATION, REFER TO JOHN DEERE 50A SERIES ROW-CROP HEAD PARTS CATALOG - PC-1747.

FOR THREE-ROLLER BELT PICKUP PARTS INFORMATION, REFER TO JOHN DEERE THREE-ROLLER BELT PICKUP PARTS CATALOG - PC-2210.

FOR 918 AND 920 DRAPER PARTS INFORMATION, REFER TO JOHN DEERE 918 AND 920 DRAPER PLATFORMS PARTS CATALOG - PC-2212.

FOR 90 SERIES CORN HEAD PARTS INFORMATION, REFER TO JOHN DEERE 90 SERIES CORN HEAD PARTS CATALOG - PC-2404.

## IMPORTANT

THIS PARTS CATALOG CONTAINS PARTS INFORMATION FOR THE 9600 MAXIMIZER™ COMBINE. VINTAGE IS DETERMINED BY THE COMBINE SERIAL NUMBER OR THE PRODUCT IDENTIFICATION NUMBER (PIN). IT IS IMPORTANT THAT THE CORRECT NUMBERS BE USED WHEN ORDERING PARTS.

## PRODUCT INFORMATION NUMBER (PIN) PLATE

THE PRODUCT IDENTIFICATION PLATE (PIN) IS LOCATED NEAR THE RIGHT-HAND SIDE OF THE TOOL BOX.  
AN EXAMPLE OF THE TWO-LINES ON THIS PIN PLATE IS:

HO9600X640301  
COMBINE

(FIRST LINE)

HO - MANUFACTURING UNIT (HARVESTER WORKS)

9600 - MODEL IDENTIFIER

X - CONFIGURATION CODE/MODEL IDENTIFIER SUFFIX

640301 - SEQUENTIAL NUMBER USED IN SERIAL NO. COLUMN

(SECOND LINE)

COMBINE - TYPE OF PRODUCT

*COPYRIGHT (C) 2000. DEERE & COMPANY. MOLINE, ILLINOIS. ALL RIGHTS RESERVED.*

THE ENGINE SERIAL NUMBER IS LOCATED ON THE RIGHT-HAND SIDE OF THE ENGINE BLOCK.

## 9600 STANDARD ENGINE 190 HP

HP4064 -UN-01JAN94

HP4064      1      2      3      4      5      6      7  
                  [ 6 ]   [ 076 ]   [ T ]   [ H ]   [ 001 ]   [ 111337 ]   [ RG ]

- 1. NUMBER OF CYLINDERS      -6-
- 2. LITRE DISPLACEMENT      -076\_
- 3. TYPE OF AIR INTAKE      -T-
- 4. FACTORY USER      -H- HARVESTER
- 5. ENGINE VERSION (FIRST)      -001-
- 6. ENGINE SERIAL NUMBER      -113337-
- 7. ENGINE MANUFACTURER      -RG- JOHN DEERE ENGINE WORKS

## 9600 OPTIONAL ENGINE 253 HP

HP4065 -UN-01JAN94

HP4065      1      2      3      4      5      6      7  
                  [ 6 ]   [ 076 ]   [ H ]   [ H ]   [ 001 ]   [ 111839 ]   [ RG ]

- 1. NUMBER OF CYLINDERS      -6-
- 2. LITRE DISPLACEMENT      -076-
- 3. TYPE OF AIR INTAKE      -H- TURBO / AIR TO AIR AFTER COOLED
- 4. FACTORY USER      -H- HARVESTER
- 5. ENGINE VERSION (FIRST)      -001-
- 6. ENGINE SERIAL NUMBER      -111839-
- 7. ENGINE MANUFACTURER      -RG- JOHN DEERE ENGINE WORKS

**Thanks very much for your reading,  
Want to get more information,  
Please click here, Then get the complete  
manual**

**JustClickHere** 

**NOTE:**

**If there is no response to click on the link above,  
please download the PDF document first, and then  
click on it.**

**Have any questions please write to me:  
[admin@servicemanualperfect.com](mailto:admin@servicemanualperfect.com)**

## PARTS LISTING INFORMATION

SERIAL NUMBER OR PRODUCT IDENTIFICATION NUMBER (PIN) INFORMATION SHOWS ON WHICH MACHINES PART MAY BE USED; FOR EXAMPLE:

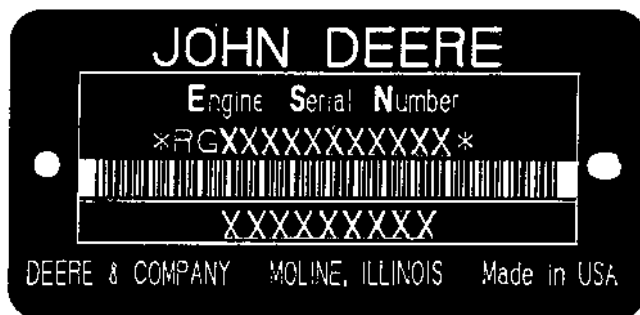
- THE PART CAN BE USED ON ALL MACHINES.
- 000000 THE PART CAN BE USED ON ALL MACHINES UP TO AND INCLUDING THE SERIAL NUMBER LISTED.
- 000000- THE PART CAN BE USED ON ALL MACHINES BEGINNING WITH THE SERIAL NUMBER LISTED.
- 000000-000000 THE PART CAN BE USED ON ALL MACHINES BETWEEN AND INCLUDING SERIAL NUMBERS LISTED.

WHEN XXXXXX'S ARE LISTED IN PLACE OF A SERIAL NUMBER, A SERIAL NUMBER CHANGE WAS MADE, BUT THE EXACT SERIAL NUMBER WAS NOT AVAILABLE WHEN THE CATALOG WAS PRINTED.

### SHORT BLOCK SERIAL NUMBER PLATE

( -RGSB076882500)

RGP3513 -UN-01JAN94



RGP3513

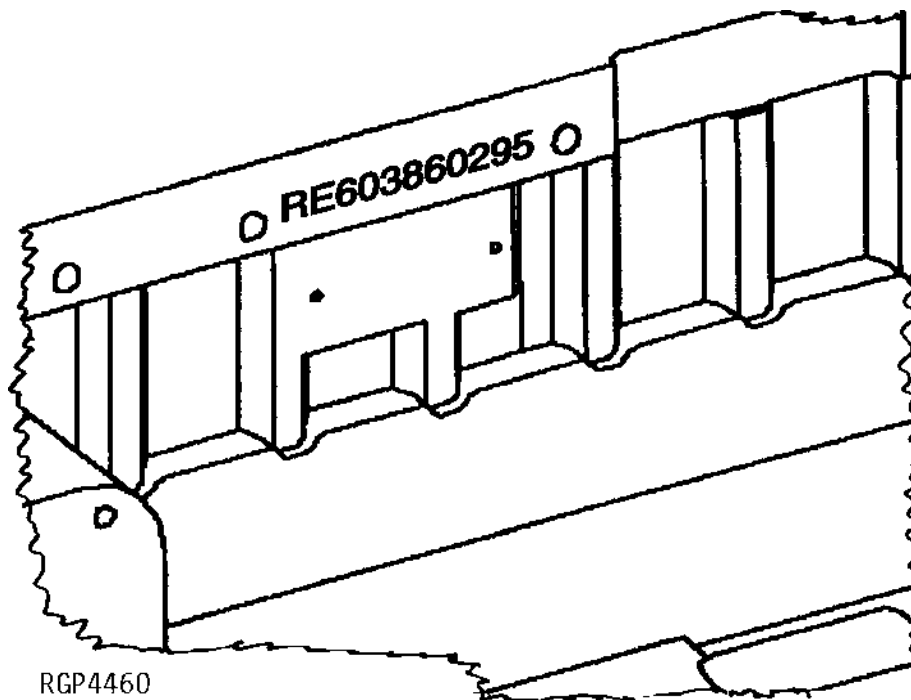
THE REPLACEMENT SHORT BLOCK ASSEMBLY HAS A SERIAL NUMBER PLATE ATTACHED. THE ORIGINAL ENGINE SERIAL NUMBER MUST BE STAMPED ONTO THE NEW PLATE IN THE BLANK SPACE PROVIDED, AS A REFERENCE FOR YOUR DEALER. THE PLATE CAN BE ATTACHED WITH (2) 37H44 DRIVE SCREWS.

- |                                       |                            |
|---------------------------------------|----------------------------|
| 1. DESIGNATES ENGINE MANUFACTURER     | RG - WATERLOO ENGINE WORKS |
| 2. DESIGNATES REPLACEMENT SHORT BLOCK | SB                         |
| 3. DESIGNATES LITERS                  | XXX- 076 (7.6)             |
| 4. DESIGNATES THE PRODUCTION DATE     | 8825                       |
| 5. DESIGNATES COMPONENT SEQUENCE      | 00                         |

## SHORT BLOCK SERIAL NUMBER IDENTIFICATION

(RE603860295- )

RGP4460 -UN-04MAR95



SERIAL NUMBER STAMPED INTO CASTING OF BLOCK NEAR PREVIOUS SERIAL NUMBER PLATE.

EXAMPLE: RE603860295

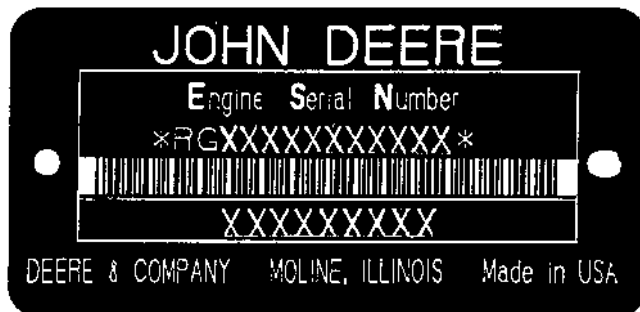
- |                                   |         |
|-----------------------------------|---------|
| 1. DESIGNATES SERVICE PART NUMBER | RE60386 |
| 2. DESIGNATES MONTH ASSEMBLED     | 02      |
| 3. DESIGNATES YEAR ASSEMBLED      | 95      |

# 1A8

9600 MAXIMIZER COMBINE

## TWO LINE BAR CODED ENGINE SERIAL NUMBER PLATE AND ADDITIONAL ENGINE INFORMATION (LOCATED ON FUEL INJECTION PUMP SIDE OF ENGINE)

RGP3513 -UN-01JAN94



RGP3513

### FIRST LINE

### DEFINES

RG - WATERLOO ENGINE WORKS

DESIGNATES ENGINE MANUFACTURER.

6

DESIGNATES NUMBER OF CYLINDERS.

076 (7.6 LITERS)

DESIGNATES LITER DISPLACEMENT.

T - TURBOCHARGED

OR

H - AIR-TO-AIR

XXXXXX

DESIGNATES ENGINE SERIAL NUMBER.

### SECOND LINE

6076XXXXX

DESIGNATES ENGINE APPLICATION

### ADDITIONAL ENGINE INFORMATION

ENGINE MODEL	ENGINE SERIAL NO.	APPLICATION
6076HH030 (260 H.P.)	(500000-565536)	(9600 OPT ENGINE) (DOMESTIC)
6076HH030 (260 H.P.)	(565537- )	(9600 OPT ENGINE) (EXPORT ONLY)
6076HH034 (260 H.P.)	(565537- )	(9600 OPT ENGINE) (DOMESTIC)
6076HH035 (218 H.P.)	(565943- )	(9600 STD ENGINE)



## **DIRECTION ARROW**

ARROWS ARE USED WITH ILLUSTRATIONS TO INDICATE THE FRONT OF THE UNIT. "RIGHT-HAND" AND "LEFT-HAND" SIDES ARE DETERMINED BY FACING IN THE DIRECTION OF MACHINE FORWARD TRAVEL.

## **BOX-ENCLOSED ILLUSTRATIONS**

A KEY NUMBER, SHOWN IN THE PARTS LIST, IS ASSIGNED TO A BOX ENCLOSING ALL PARTS SOLD AS A SERVICE ASSEMBLY. A BOX NOT KEYED INCLUDES NON-CURRENT PARTS.

## **KITS**

KIT INFORMATION WILL BE FOUND IMMEDIATELY FOLLOWING THE STORY IN WHICH IT IS USED. THE ILLUSTRATION IS REPEATED WITH ONLY THE KIT PARTS CALLED OUT AND WITH ALL OTHER PARTS SHOWN IN PHANTOM.

## **JDM REMANUFACTURED COMPONENTS**

THE SERVICE PARTS LISTED IN THIS CATALOG ARE INTENDED FOR THE REPAIR OF ORIGINAL EQUIPMENT COMPONENTS. ALTHOUGH MOST SERVICE PARTS MAY BE USED TO REPAIR REMANUFACTURED COMPONENTS, THE REMANUFACTURED DESIGN MAY CHANGE PARTS SUFFICIENTLY SO THAT SERVICE PARTS ARE INADEQUATE OR NOT USABLE.

## **BOLT AND CAP SCREW STRENGTH IDENTIFICATION**

BOLTS AND CAP SCREWS REQUIRED TO HAVE HIGH-STRENGTH QUALITIES EQUIVALENT TO SAE GRADE 8 ARE IDENTIFIED THROUGHOUT THIS CATALOG BY THE DESCRIPTION HS SAE 8. ALL STANDARD BOLTS AND CAP SCREWS ARE SAE GRADE 5 OR LOWER. BOLTS AND CAP SCREWS REQUIRED TO HAVE HIGH-STRENGTH QUALITIES EQUIVALENT TO PROPERTY CLASS 10.9 ARE IDENTIFIED THROUGHOUT THIS CATALOG BY HS 10.9. ALL STANDARD BOLTS AND CAP SCREWS ARE PROPERTY CLASS 8.8 OR LOWER.

## **SI UNITS OF MEASURE**

METRIC DIMENSIONS ARE GIVEN, WHERE APPLICABLE, THROUGHOUT THIS PARTS CATALOG.

## TRADEMARKS

THROUGHOUT THIS PARTS CATALOG, YOU WILL FIND THE FOLLOWING DEERE & COMPANY TRADEMARKS:

DIAL-A-SPEED™  
DIAL-A-MATIC™  
HARVESTRAK™  
CONTOUR MASTER™

POSI-TORQ™  
TORQ-GARD SUPREME®  
QUIK-TATCH™

## CHANGE INDICATOR LINE

CHANGES AFFECTING THE ORDERING OF PARTS ARE IDENTIFIED BY VERTICAL LINES MARKED IN THE LEFT-HAND MARGIN OF REVISED PARTS LISTING IMAGES. A LINE IS ALSO AT THE LEFT-HAND EDGE OF THE SAME PART NUMBER IN THE NUMERICAL INDEX TO SHOW THE LOCATION OF REVISED INFORMATION.

## FUNCTION CODE

(EXAMPLE - FC: 5000)

FUNCTION CODES ARE LOCATED ON EACH PAGE IN THE UPPER RIGHT-HAND CORNER IN THE BOX. THE CODE LISTED IS A GROUPING CODE THAT CAN BE USED FOR WARRANTIES AND FOR DTAC TO IDENTIFY CERTAIN AREAS.

## COMPLETE GOODS LISTINGS

COMPLETE GOODS ARE IN BOLD FACE TYPE. ORDER SEPARATELY. DO NOT INCLUDE ON REPLACEMENT PARTS ORDER.

FOR INDIVIDUAL HEADER PARTS CATALOGS REFER TO:

PC-2104 - PARTS CATALOG FOR JOHN DEERE 900 SERIES PLATFORMS

PC-2210 - PARTS CATALOG FOR JOHN DEERE THREE ROLLER BELT PICK-UP

PC-2212 - PARTS CATALOG FOR JOHN DEERE 918 AND 920 DRAPER PLATFORMS

PC-1747 - PARTS CATALOG FOR JOHN DEERE 50A SERIES ROW-CROP HEADS

PC-1223 - PARTS CATALOG FOR JOHN DEERE 40 SERIES CORN HEADS

PC-2404 - PARTS CATALOG FOR JOHN DEERE 90 SERIES CORN HEADS

---

## SECTION INDEX

- SECTION 10 - GENERAL INFORMATION
- SECTION 20 - ENGINE FAN, INTERCOOLER AND SCREENS
- SECTION 25 - 6076 ENGINE (SERIAL NUMBER -499999)
- SECTION 26 - 6076 ENGINE (SERIAL NUMBER 500000- )
- SECTION 30 - FUEL AND AIR
- SECTION 40 - ELECTRICAL
- SECTION 50 - POWER TRAIN
- SECTION 60 - STEERING AND BRAKES
- SECTION 70 - HYDRAULICS
- SECTION 80 - SEPARATOR SHELL
- SECTION 90 - OPERATOR'S STATION
- SECTION 110 - FEEDER HOUSE
- SECTION 120 - THRESHING AND SEPARATION
- SECTION 121 - DRIVES
- SECTION 125 - RESIDUE DISPOSAL
- SECTION 130 - CLEAN GRAIN ELEVATOR, GRAIN TANK AND UNLOADING AUGER
- SECTION 160 - DIAL-A-MATIC HEADER HEIGHT CONTROL
- SECTION 170 - DECALS, BELTS AND CHAINS
- SECTION 180 - NUMERICAL INDEX

## ALPHABETICAL INDEX

GRID	A	PAGE	GRID	PAGE
6F10	A/C COMPRESSOR HARDWARE (650301- ) R134A.....	90-94	6E1	AIR SEAT SUSPENSION KITS (665301- ).....
1C15	A/C CONDENSER, AIR INTER COOLER AND RADIATOR WITH OIL COOLER .....	20-22	6E3	AIR SEAT SUSPENSION KITS (665301- ).....
3E3	A/C HIGH PRESSURE SWITCH, 6076 .....	40-60	3C17	AIR SEAT WIRING HARNESS (660301- ) .....
5D16	ACCUMULATOR AND MOUNTING, ONE GALLON (655301- ) .....	70-46	6D21	AIR SUSPENSION KITS, SEAT (665301- ) .....
5B21	ACCUMULATOR PRESSURE GAUGE WIRING HARNESS .....	70-2	6D23	AIR SUSPENSION KITS, SEAT (665301- ) .....
5D14	ACCUMULATOR, DUAL, HALF GALLON.....	70-44	6E1	AIR SUSPENSION KITS, SEAT (665301- ) .....
5D12	ACCUMULATOR, SINGLE MOUNTING BRACKET ONE HALF GALLON .....	70-42	6E3	AIR SUSPENSION KITS, SEAT (665301- ) .....
5D12	ACCUMULATOR, SINGLE, ONE HALF GALLON .....	70-42	6D19	AIR SUSPENSION, SEAT (660301- ) .....
4G13	ACTUATOR, PARK BRAKE ( -640300) .....	60-2	2F15	ALTERNATOR ADJUSTING STRAP.....
3D11	ADAPTER, WIRING HARNESS (CONTOUR MASTER)	40-44	1H6	ALTERNATOR ADJUSTING STRAP (6076) (EARLY DESIGN) .....
3D13	ADAPTER, WIRING HARNESS (CONTOUR MASTER)	40-46	3E19	ALTERNATOR AND SHEAVE ( -636603).....
4I6	ADJUSTABLE REAR AXLE.....	60-43	3E23	ALTERNATOR MOUNTING.....
4I12	ADJUSTABLE REAR AXLE STEERING TIE RODS .....	60-49	2F15	ALTERNATOR SUPPORT STRAP .....
6D15	ADJUSTER, OPERATOR'S SEAT LEVER .....	90-48	1H6	ALTERNATOR SUPPORT STRAP (6076) (EARLY DESIGN) .....
8D11	ADJUSTING BRACKET, CYLINDER DRIVE, DUAL-RANGE .....	121-42	3E20	ALTERNATOR, SHEAVE AND BELT .....
6E7	ADJUSTING MECHANISM, ARMREST, R.H. ( -640300) .....	90-64	3E17	ALTERNATOR, VOLTAGE REGULATOR (90 AMP) MOTOROLA-PRESTOLITE ( -636603) .....
6E9	ADJUSTING MECHANISM, ARMREST, R.H. (640301- ) .....	90-66	3E21	ALTERNATOR, VOLTAGE REGULATOR (95 AMP) BOSCH (636604- ) .....
3F1	ADJUSTING MOTOR, CONCAVE.....	40-82	3D5	ANTENNA, SPEAKERS AND RADIO .....
3E15	ADJUSTING MOTOR, SEPARATOR FAN DRIVE .....	40-72	8D3	ARM, LOCKOUT, DUAL-RANGE .....
2G3	AIR CLEANER AND INTAKE TUBES ( -645300) .....	30-12	2C22	ARM, ROCKER .....
2G5	AIR CLEANER AND INTAKE TUBES (645301- ) .....	30-14	1E9	ARM, ROCKER (EARLY DESIGN) .....
3E3	AIR CLEANER PLUGGED SWITCH, 6076.....	40-60	2F11	ARMATURE (DENSO) (12V F4) .....
3C15	AIR CONDITIONER AND HEATER (WIRING HARNESS) ( -660300) .....	40-22	1G23	ARMATURE (DENSO) (12V F4) (ESN 136851-499999) .....
3C23	AIR CONDITIONER AND HEATER SWITCH.....	40-30	5E4	ARMATURE KIT, SOLENOID CONTROL VALVE, RELIEF VALVE MODULE .....
3C21	AIR CONDITIONER PRESSURIZER FAN KIT (640301-650300) .....	40-28	1H3	ARMATURE, STARTER (ND) (NO. 028000-3292) (6076)(EARLY DESIGN).....
3C19	AIR CONDITIONER THERMOSTAT KIT (630301-640300) .....	40-26	6E11	ARMREST (L.H.) .....
3C15	AIR CONDITIONER WIRING HARNESS ( -660300) .....	40-22	6E7	ARMREST ADJUSTING MECHANISM (R.H.) ( -640300) .....
3C17	AIR CONDITIONER WIRING HARNESS (660301- ) .....	40-24	6E9	ARMREST ADJUSTING MECHANISM, R.H. (640301- ) .....
6E20	AIR CONDITIONING & HEATER AND PRESSURIZING FAN .....	90-78	3C9	ARMREST PANEL, OPERATOR'S .....
6D1	AIR CONDITIONING AND HEATER DUCTS .....	90-33	3C9	ARMREST ROCKER SWITCHES .....
6F3	AIR CONDITIONING COMPRESSOR ( -650300) R-12 .....	90-86	3C7	ARMREST WIRING HARNESS .....
6F8	AIR CONDITIONING COMPRESSOR (650301- ) R134A .....	90-92	6E5	ARMREST WITH GLOVE BOX (R.H.).....
5G3	AIR CONDITIONING CONDENSER AND OIL COOLER FOR 9600 253 HP .....	70-110	7E9	ARMS, FRAME, PRECLEANER CHAFFER .....
6E22	AIR CONDITIONING SYSTEM .....	90-80	4E10	ARMS, STEERING, CAM LOBE MOTOR (STEERABLE MOTOR) .....
6E24	AIR CONDITIONING SYSTEM ( -650300) R-12 .....	90-82	3C9	ASHTRAY .....
6F1	AIR CONDITIONING SYSTEM (650301- ) R134A .....	90-84	2C3	ASSEMBLY, COMPLETE BLOCK (ESN 500000- ) .....
6E18	AIR CONDITIONING/HEATER HOUSING AND FILTERS.....	90-76	5E22	ASSEMBLY, SIX STACK SOLENOID CONTROL VALVE (660301- ) .....
3E3	AIR INLET TEMP SWITCH (253 HP), 6076.....	40-60	9E17	AUGER BELTS .....
1C15	AIR INTER COOLER, RADIATOR WITH OIL COOLER AND A/C CONDENSER .....	20-22	9D24	AUGER COVERS AND CHANNEL, CROSS .....
6D19	AIR SEAT SUSPENSION (660301- ) .....	90-52	5H19	AUGER DRIVE MUD SHIELD, R.H. ....
6D21	AIR SEAT SUSPENSION KITS (665301- ).....	90-54	8I6	AUGER DRIVE SHIELD, UPPER TAILINGS .....
6D23	AIR SEAT SUSPENSION KITS (665301- ).....	90-56	8I8	AUGER DRIVE SHIELD, UPPER TAILINGS .....
			8I6	AUGER DRIVE, UPPER TAILINGS .....
			8I8	AUGER DRIVE, UPPER TAILINGS .....
			9C5	AUGER HOUSING, LOADING, UPPER CLEAN GRAIN .....
			9C7	AUGER HOUSING, LOADING, UPPER CLEAN GRAIN (660301- ) .....
			3D21	AUGER SENSOR AND WIRING HARNESS, UNLOADING (660301- ) .....
			5E10	AUGER SWING, SOLENOID CONTROL VALVE DOUBLE PILOTED ( -650300) .....
			9D9	AUGER SWIVEL SUPPORT AND BRACES .....
			9C5	AUGER TRANSITION HOUSING .....
			8H19	AUGER TROUGH, LOWER TAILINGS.....

**ALPHABETICAL INDEX - CONTINUED**

GRID		PAGE	GRID		PAGE
3D21	AUGER WIRING HARNESS, UNLOADING (660301- )	40 - 54	9E18	BELT, AIR CONDITIONER COMPRESSOR	170 - 3
9D22	AUGER, GRAIN TANK CROSS	130 - 54	9E17	BELT, AUGER	170 - 2
9D5	AUGER, GRAIN TANK, VERTICAL UNLOADING	130 - 38	9E20	BELT, BEATER	170 - 5
9D18	AUGER, HORIZONTAL UNLOADING	130 - 50	9E18	BELT, CLEAN GRAIN ELEVATOR	170 - 3
9C9	AUGER, LOADING, CLEAN GRAIN	130 - 16	9E17	BELT, CONVEYOR FEEDER	170 - 2
9C11	AUGER, LOADING, CLEAN GRAIN FOLD (660301- )	130 - 18	9E18	BELT, COOLING FAN	170 - 3
8H17	AUGER, LOWER TAILINGS	125 - 48	9E18	BELT, CYLINDER DRIVE	170 - 3
9E18	AUGER, LOWER TAILINGS, BELTS	170 - 3	9E18	BELT, DRIVE, CYLINDER INTERMEDIATE	170 - 3
7D13	AUGER, SHOE GRAIN SUPPLY AND HOUSING	120 - 44	7D9	BELT, DRIVE, SHAFT AND BEATER	120 - 40
7D15	AUGER, SHOE GRAIN SUPPLY AND HOUSING	120 - 46	9E17	BELT, ENGINE DRIVE	170 - 2
8I6	AUGER, UPPER TAILINGS	125 - 62	9E19	BELT, FAN, CLEANING	170 - 4
8I8	AUGER, UPPER TAILINGS	125 - 64	6I5	BELT, FAN, DUST, LH SIDE FEEDER HOUSE-RETROFIT INSTALLATION	110 - 60
3B24	AUX FIELD LIGHTS SWITCH, OPTIONAL	40 - 4	9E17	BELT, FEEDER CONVEYOR	170 - 2
3C5	AUXILIARY FIELD LIGHTING	40 - 10	9E19	BELT, FEEDER HOUSE	170 - 4
4E15	AXLE SHAFT FINAL DRIVE	50 - 69	9E19	BELT, HEADER AND REEL	170 - 4
4C8	AXLE SPACERS	50 - 13	9E20	BELT, LOWER TAILINGS AUGER	170 - 5
4C9	AXLE SPACERS, PLANETARY FINAL DRIVE	50 - 14	9E18	BELT, LOWER TAINLINGS AUGER	170 - 3
4C17	AXLE, FINAL DRIVE	50 - 22	6D12	BELT, OPERATOR'S SEAT (665301- )	90 - 44
4C6	AXLE, FRONT	50 - 11	9E18	BELT, ROTARY SCREEN	170 - 3
4C7	AXLE, FRONT	50 - 12	6D14	BELT, SEAT - RETROFIT KIT (MACHINES PRIOR TO 1996 MODEL YEAR)	90 - 46
4I6	AXLE, REAR, ADJUSTABLE	60 - 43	6D13	BELT, SEAT - TRAINING SEAT (665301- )	90 - 45
4I7	AXLE, REAR, SPINDLES	60 - 44	9E19	BELT, STRAW CHOPPER	170 - 4
4I3	AXLE, REAR, SUPPORT	60 - 40	9E19	BELT, STRAW SPREADER	170 - 4
			9E19	BELT, UNLOADING AUGERS	170 - 4
			9E20	BELT, UNLOADING SYSTEM	170 - 5
			9E20	BELT, UPPER TAILINGS AUGER	170 - 5
			9E17	BELT, WALKER	170 - 2
			5E8	BI-DIRECTIONAL MODULE, SOLENOID CONTROL VALVE, REEL LIFT AND CYLINDER SPEED	70 - 64
			2C3	BLOCK ASSEMBLY, COMPLETE (ESN 500000- )	26 - 6
			1D10	BLOCK, CYLINDER (EARLY DESIGN) (WITHOUT HEAD BOLTS)	25 - 4
			1C11	BLOCK, ENGINE COOLANT HEATER	20 - 18
			2C7	BLOCK, SHORT (WITH HEAD BOLTS)	26 - 10
			2C5	BLOCK, SHORT (ESN 500000- ) (WITHOUT HEAD BOLTS)	26 - 8
			1D14	BLOCK, SHORT (HH001-OPT. HP) ( -499999)(WITHOUT HEAD BOLTS)	25 - 8
			1D18	BLOCK, SHORT (WITH HEAD BOLTS) (TH001,HH001,HH003)(ESN -499999)	25 - 12
			1D16	BLOCK, SHORT (6076HH003)( STD. HP)(LATE DESIGN -499999)(WITHOUT HEAD BOLTS)	25 - 10
			1D14	BLOCK, SHORT(TH001-STD. HP) (EARLY DESIGN -499999) W/O HEAD BOLTS	25 - 8
			2C20	BOLT, CYLINDER HEAD (ESN 500000- )	26 - 24
			1E10	BOLTS, CYLINDER HEAD (ESN -499999)	25 - 30
			3E21	BOSCH ALTERNATOR AND VOLTAGE REGULATOR (95 AMP) (636604- )	40 - 78
			6C17	BOX, TOOL (660301- )	90 - 24
			4H6	BRACKET, BRAKE CABLE SUPPORT (645307- )	60 - 19
			7D5	BRACKET, CONCAVE INDICATOR AND CABLE	120 - 36
			6H4	BRACKET, FEEDER CONVEYOR	110 - 37
			3D23	BRACKET, LOW SHAFT SPEED SENSORS	40 - 56
			5D12	BRACKET, SINGLE ACCUMULATOR MOUNTING ONE HALF GALLON	70 - 42
			3D15	BRACKET, STRAW CHOPPER SENSOR	40 - 48
			5E21	BRACKETS, SOLENOID CONTROL VALVE	70 - 78
			4H6	BRAKE CABLE SUPPORT BRACKET (645307- )	60 - 19
			4H1	BRAKE CYLINDER, MASTER	60 - 14
			4G21	BRAKE CYLINDERS, MASTER AND BRAKE PEDALS	60 - 10

**B**

3H3	BACKSHAFT SPEED SENSOR, FEEDER HOUSE (645316- )	40 - 134
9C22	BASE, GRAIN TANK	130 - 30
3F5	BATTERIES, CABLE AND HOLDDOWN	40 - 86
3F3	BATTERIES, CABLE AND HOLDDOWN-FRENCH	40 - 84
3G12	BEACON LIGHTS, REVOLVING (EXPORT ONLY)	40 - 118
7F5	BEARING KIT, STRAW WALKER (650301-665300)	120 - 82
7F7	BEARING KIT, STRAW WALKERS (665301- )	120 - 84
4E5	BEARING, COVER AND QUILL (STEERABLE MOTOR)	50 - 58
4C16	BEARING, FINAL DRIVE	50 - 21
4C17	BEARING, FINAL DRIVE	50 - 22
4D1	BEARING, FINAL DRIVE	50 - 30
4E15	BEARING, FINAL DRIVE	50 - 69
4E16	BEARING, FINAL DRIVE PINION SHAFT	50 - 70
4E18	BEARING, FINAL DRIVE PINION SHAFT	50 - 72
1E1	BEARING, MAIN	25 - 20
2C14	BEARING, MAIN (6076)	26 - 17
8H23	BEARING, TAILINGS ELEVATOR CONVEYOR	125 - 54
1E1	BEARING, THRUST	25 - 20
2C14	BEARING, THRUST (6076)	26 - 17
4C19	BEARING, TRANSMISSION	50 - 24
4C21	BEARING, TRANSMISSION PINION SHAFT	50 - 26
1F1	BEARING, WATER PUMP (EARLY DESIGN) (ESN -499999)	25 - 46
2D7	BEARING, WATER PUMP (ESN 500000- )	26 - 38
7F3	BEARINGS, STRAW WALKERS ( -650300)	120 - 80
9E20	BEATER BELTS SHEAVES	170 - 5
7D11	BEATER COVER	120 - 42
8D23	BEATER DRIVE SHEAVES AND TIGHTENER	121 - 54
7C13	BEATER GRATE CURTAIN (652179- )	120 - 20
7D9	BEATER SHAFT AND DRIVE BELT	120 - 40
3E20	BELL, ALTERNATOR	40 - 77
9E3	BELT GUIDE, UNLOADING AUGER DRIVE	130 - 60
8E13	BELT PICKUP / REEL DRIVE, PUMP MOUNTING SHEAVE	121 - 68

## ALPHABETICAL INDEX - CONTINUED

GRID		PAGE	GRID		PAGE
4G17	BRAKE LINES AND HOSES, PARKING, UPPER ( -640300) .....	60 - 6	4E3	CAM LOBE MOTOR (STEERABLE MOTOR) .....	50 - 56
4G23	BRAKE LINES, MASTER CYLINDER AND RESERVOIR .....	60 - 12	4E6	CAM, CARRIER, AND PISTON (STEERABLE MOTOR).....	50 - 60
4G19	BRAKE PEDAL AND SEAL, PARKING (640301- ) .....	60 - 8	1E6	CAMSHAFT (ESN -499999)(W/R86565 GEAR) (TH001, HH001, HH004).....	25 - 26
4G21	BRAKE PEDALS AND CYLINDERS .....	60 - 10	2C18	CAMSHAFT (ESN 500000- ) .....	26 - 21
4H3	BRAKE SHOES AND DRUM (LEFT-HAND ILLUSTRATED) .....	60 - 16	1E7	CAMSHAFT (W/R105488 GEAR)(6076HH003) .....	25 - 27
4H5	BRAKE SLAVE CYLINDER .....	60 - 18	1E6	CAMSHAFT BUSHING (ESN -499999) (TH001, HH001, HH004).....	25 - 26
4G13	BRAKE, PARK, ACTUATOR ( -640300) .....	60 - 2	2C1	CAMSHAFT BUSHING (ESN 500000- ) .....	26 - 4
4G15	BRAKE, PARKING, LINES ( -640300) .....	60 - 4	2C18	CAMSHAFT BUSHING (ESN 500000- ) .....	26 - 21
4G12	BRAKE, PARKING, VALVE ( -640300) .....	60 - 1	1E7	CAMSHAFT BUSHING (6076HH003) .....	25 - 27
3F11	BREAKER, CIRCUIT, ENGINE COMPARTMENT .....	40 - 92	2C22	CAMSHAFT FOLLOWER.....	26 - 26
3F8	BREAKER, CIRCUIT, ENGINE COMPARTMENT ( -660300) .....	40 - 89	1E9	CAMSHAFT FOLLOWER (EARLY DESIGN) .....	25 - 29
3F9	BREAKERS, CIRCUIT, ENGINE COMPARTMENT (660301- ) .....	40 - 90	1E6	CAMSHAFT FOLLOWER (ESN -499999) (TH001, HH001, HH004).....	25 - 26
1E6	BUSHING, CAMSHAFT (ESN -499999) (TH001, HH001, HH004).....	25 - 26	2C18	CAMSHAFT FOLLOWER (ESN 500000- ) .....	26 - 21
2C1	BUSHING, CAMSHAFT (ESN 500000- ) .....	26 - 4	1E7	CAMSHAFT FOLLOWER (6076HH003) .....	25 - 27
2C18	BUSHING, CAMSHAFT (ESN 500000- ) .....	26 - 21	1E6	CAMSHAFT GEAR (ESN -499999)(W/R86565 GEAR)(TH001, HH001, HH004) .....	25 - 26
1E7	BUSHING, CAMSHAFT (6076HH003) .....	25 - 27	2C18	CAMSHAFT GEAR (ESN 500000- ) .....	26 - 21
1E20	BYPASS VALVE, OIL COOLER (ESN -156313).....	25 - 40	9D3	CAP, GRAIN TANK CLEAN OUT CHUTE .....	130 - 36
1E21	BYPASS VALVE, OIL COOLER (ESN 156314-499999) .....	25 - 41	1D12	CAP, MAIN BEARING .....	25 - 6
2D4	BYPASS VALVE, OIL FILTER (ESN 500000- ).....	26 - 34	2C1	CAP, MAIN BEARING (ESN 500000- ) .....	26 - 4
1E22	BYPASS VALVE, OIL FILTER (EARLY DESIGN) (ESN -499999).....	25 - 42	1E4	CAP, OIL FILLER (HH003) (EARLY DESIGN).....	25 - 24
	<b>C</b>		1E5	CAP, OIL FILLER (TH001, HH001, HH004) (ESN -499999) .....	25 - 25
6C25	CAB AIR FILTER AND HOUSING .....	90 - 32	4E8	CAPS, YOKE AND PIVOTS (STEERABLE MOTOR) ....	50 - 62
3B21	CAB DOME LIGHT .....	40 - 1	4E6	CARRIER, PISTON, AND CAM (STEERABLE MOTOR).....	50 - 60
6C5	CAB DOOR AND GLASS .....	90 - 12	4F25	CASE DRAIN, 4-WHEEL DRIVE, HYDRAULIC LINES .....	50 - 104
6C3	CAB DOOR LATCH .....	90 - 10	9D3	CASE, VERTICAL AUGER LOWER GEAR .....	130 - 36
6B20	CAB FLOOR MAT .....	90 - 2	2D18	CENTER HOUSING, TURBOCHARGER (AIRESEARCH) .....	26 - 51
6C7	CAB FRAME AND SUPPORT .....	90 - 14	1F14	CENTER HOUSING, TURBOCHARGER (AIRESEARCH) (ESN -499999) .....	25 - 60
6C1	CAB INTERIOR TRIM PANELS .....	90 - 8	2D17	CENTER HOUSING, TURBOCHARGER (SCHWITZER) .....	26 - 50
6C21	CAB LANDING AND MIRROR .....	90 - 28	1F15	CENTER HOUSING, TURBOCHARGER (SCHWITZER) (ESN -499999).....	25 - 61
6C19	CAB LANDING AND MIRROR ( -650300).....	90 - 26	3F15	CENTRAL ELECTRONICS MODULE AND CIRCUIT BOARDS .....	40 - 96
6C23	CAB LANDING AND MIRROR (R.H.) .....	90 - 30	3F15	CENTRAL ELECTRONICS MODULE CIRCUIT BOARDS .....	40 - 96
3B21	CAB LIGHT, DOME .....	40 - 1	8G17	CHAFF SPREADER (DUAL MOTOR) SHIELDS AND HANDLES (650301- ) .....	125 - 24
6D10	CAB OPERATOR'S SEAT AND BACKREST .....	90 - 42	8H1	CHAFF SPREADER CONTROL, CHECK VALVE .....	125 - 32
6B20	CAB PANELS AND FLOOR MAT .....	90 - 2	8G13	CHAFF SPREADER DISC (DUAL MOTOR) (650301- ) .....	125 - 20
3C1	CAB POST INSTRUMENT PANEL .....	40 - 6	8G11	CHAFF SPREADER DISC AND DRIVE BELT ( -650300) .....	125 - 18
6D2	CAB POST INSTRUMENT PANEL .....	90 - 34	8G15	CHAFF SPREADER FRAME, SHIELDS AND HANDLES ( -650300) .....	125 - 22
6F16	CAB POST INSTRUMENT PANEL LH (EXPORT ONLY).....	90 - 100	8H3	CHAFF SPREADER LINES AND FITTINGS .....	125 - 34
6B24	CAB REAR AND SIDE SEALS .....	90 - 6	5C5	CHAFF SPREADER MOTOR (EATON) (656147- ) .....	70 - 10
6C9	CAB ROOF AND SUPPORTS.....	90 - 16	5C3	CHAFF SPREADER MOTOR (TRW ROSS) ( -656146) .....	70 - 8
3C3	CAB ROOF LIGHTS .....	40 - 8	8G23	CHAFF SPREADER MOUNTING SUPPORT .....	125 - 30
6D17	CAB SEAT HEIGHT ADJUSTER .....	90 - 50	8G19	CHAFF SPREADER PAN AND SEALS ( -650300) .....	125 - 26
6B22	CAB SOUND DEADENING, FOAM AND SEALS.....	90 - 4	8G21	CHAFF SPREADER PAN AND SEALS (650301- ).....	125 - 28
3B22	CAB WIRING HARNESS .....	40 - 2	8H11	CHAFF SPREADER PUMP .....	125 - 42
6C5	CAB, COMPLETE .....	90 - 12	8H7	CHAFF SPREADER, HOSES, LINES AND MOTOR ( -650300) .....	125 - 38
3F5	CABLE, BATTERY .....	40 - 86			
3F3	CABLE, BATTERY-FRENCH.....	40 - 84			
7D5	CABLE, CONCAVE INDICATOR, AND BRACKETS .....	120 - 36			
4B23	CABLE, CONTROL, HYDROSTATIC DRIVE ( -645300) .....	50 - 4			
4C1	CABLE, HYDROSTATIC DRIVE CONTROL (645301- ) .....	50 - 6			
3F23	CABLE, WIRING .....	40 - 104			

**ALPHABETICAL INDEX - CONTINUED**

<i>GRID</i>	<i>PAGE</i>	<i>GRID</i>	<i>PAGE</i>
8H9	125 - 40	9B23	130 - 6
8H5	125 - 36	9B21	130 - 4
8D21	121 - 52	9B23	130 - 6
7E11	120 - 66	9D3	130 - 36
7E13	120 - 67A	2G3	30 - 12
7E15	120 - 68	2G5	30 - 14
7E17	120 - 70	7D19	120 - 50
7E9	120 - 64	7D21	120 - 52
7E5	120 - 60	8E1	121 - 56
7E3	120 - 58	7D19	120 - 50
811	125 - 57	7D21	120 - 52
9B21	130 - 4	7D23	120 - 54
9B23	130 - 6	7E1	120 - 56
6H3	110 - 36	7D17	120 - 48
6H4	110 - 37	6G16	110 - 24
8H23	125 - 54	6F3	90 - 86
9D24	130 - 56	6F4	90 - 87
9D5	130 - 38	6F9	90 - 93
5G11	70 - 118	8C17	121 - 24
9D3	130 - 36	6H9	110 - 42
3C9	40 - 14	6F3	90 - 86
3C1	40 - 6	2F11	26 - 90
6D2	90 - 34	1G23	25 - 98
3F15	40 - 96	1H2	25 - 102
3F11	40 - 92	4H11	60 - 24
3F8	40 - 89	6E14	90 - 72
3F9	40 - 90	2F23	30 - 8
3F11	40 - 92	2G1	30 - 10
3F8	40 - 89	1G25	25 - 100
3F9	40 - 90	5H1	80 - 12
3E13	40 - 70	5H3	80 - 14
9B21	130 - 4	5H5	80 - 16
9B23	130 - 6	5H7	80 - 18
9C14	130 - 22	2C3	26 - 6
9C14	130 - 22	6E24	90 - 82
9C14	130 - 22	6F1	90 - 84
9C12	130 - 20	6F4	90 - 87
9C16	130 - 24	6F9	90 - 93
9C18	130 - 26	6F3	90 - 86
9C3	130 - 10	6F5	90 - 88
9C3	130 - 10	6F6	90 - 90
9C3	130 - 10	6F11	90 - 95
9C1	130 - 8	6F4	90 - 87
9C9	130 - 16	6F3	90 - 86
9C5	130 - 12	6F8	90 - 86
9C7	130 - 14	9E18	170 - 3
9C11	130 - 18		
9B19	130 - 2		
9B19	130 - 2		
9B21	130 - 4		

## ALPHABETICAL INDEX - CONTINUED

GRID		PAGE	GRID		PAGE
6F3	COMPRESSOR, CLUTCH PULLEY ( -650300) R-12 .....	90 - 86	4C1	CONTROL CABLES, HYDROSTATIC DRIVE (645301- ) .....	50 - 6
3F1	CONCAVE ADJUSTING MOTOR .....	40 - 82	3C9	CONTROL PANEL, OPERATOR'S ARMREST .....	40 - 14
7D5	CONCAVE INDICATOR, CABLE AND BRACKETS.....	120 - 36	2E3	CONTROL UNIT, ELECTRONIC (6076HH030) (ROBERT BOSCH).....	26 - 60
7D7	CONCAVE INDICATOR, CORN AND SMALL GRAIN....	120 - 38	2E5	CONTROL UNIT, ELECTRONIC (6076HH034) (ROBERT BOSCH).....	26 - 61A
7C15	CONCAVE, RASP BAR AND GRATE .....	120 - 22	3F13	CONTROL UNIT, ELECTRONIC (ECU) .....	40 - 94
7C17	CONCAVE, RASP BAR AND GRATE .....	120 - 24	2E9	CONTROL UNIT, ELECTRONIC (6076HH031) (RB) (LATE DESIGN F.I.P.) .....	26 - 64
7D1	CONCAVE, SPIKE TOOTH.....	120 - 32	2E11	CONTROL UNIT, ELECTRONIC (6076HH035) (RB) (LATE DESIGN F.I.P.) .....	26 - 65A
7C19	CONCAVE, SPIKE-TOOTH .....	120 - 26	4E13	CONTROL VALVE .....	50 - 67
7C23	CONCAVE, SPIKE-TOOTH .....	120 - 30	4E12	CONTROL VALVE ( -655300).....	50 - 66
6E24	CONDENSER, AIR CONDITIONER ( -650300) R-12 .....	90 - 82	5E22	CONTROL VALVE MODULE, SIX STACK SOLENOID ASSEMBLY & MOUNTINGS (660301- ) .....	70 - 80
6F1	CONDENSER, AIR CONDITIONER (650301- ) R134A .....	90 - 84	4E14	CONTROL VALVE SOLENOID (FOUR-WHEEL DR.) ....	50 - 68
5G3	CONDENSER, AIR CONDITIONING AND OIL COOLER FOR 9600 253 HP .....	70 - 110	6F12	CONTROL VALVE, HEATER .....	90 - 96
1D9	CONDITIONER, COOLANT.....	25 - 2	4D9	CONTROL VALVE, HYDRO. DR. DISPLACEMENT .....	50 - 38
2B24	CONDITIONER, COOLANT.....	26 - 3	5E15	CONTROL VALVE, SOLENOID - CONTOUR MASTER (660301- ) .....	70 - 72
1D23	CONNECTING RODS .....	25 - 17	5E12	CONTROL VALVE, SOLENOID, FOR AUGER SWING..	70 - 68
2C12	CONNECTING RODS (6076) .....	26 - 15	6E7	CONTROL, ARMREST ADJUSTING MECHANISM, R.H. ( -640300).....	90 - 64
1G16	CONNECTORS, ELECTRICAL, WEATHERPACK .....	25 - 90	3G8	CONVENIENCE OUTLET .....	40 - 114
3F17	CONNECTORS, ELECTRICAL, WEATHERPACK .....	40 - 98	3G10	CONVENIENCE OUTLET (660301- ).....	40 - 116
2F5	CONNECTORS, ELECTRICAL, WEATHERPACK (6076).....	26 - 84	5C8	CONVERSION PARTS, HUDRAULIC, 200 SERIES CUTTING PLATFORM.....	70 - 13
1G10	CONNECTORS, FUEL INJECTION PUMP HOUSING (ND) (TH001/HH003)(ESN -499999) .....	25 - 82	9E17	CONVEYOR AUGER BELTS, .....	170 - 2
2E14	CONNECTORS, FUEL INJECTION PUMP HOUSING (ND) (6076HH031) (EARLY DESIGN F.I.P.) .....	26 - 67	8D21	CONVEYOR AUGERS, SIEVE, CHAFFER DRIVE AND STRAW WALKER.....	121 - 52
2E15	CONNECTORS, FUEL INJECTION PUMP HOUSING (RB)(HH031ORHH035)(LATE DESIGN F.I.P.) .....	26 - 68	8D19	CONVEYOR AUGERS, STRAW WALKER, SIEVE AND CHAFFER DRIVE .....	121 - 50
1G9	CONNECTORS, FUEL INJECTION PUMP HOUSING (ROBERT BOSCH) (6076HH001/HH004).....	25 - 81	9B21	CONVEYOR CHAIN, CLEAN GRAIN .....	130 - 4
1F17	CONNECTORS, FUEL INJECTION PUMP HOUSING (6076) (ROBERT BOSCH) (EARLY DESIGN) .....	25 - 63	9B23	CONVEYOR CHAIN, CLEAN GRAIN .....	130 - 6
2E13	CONNECTORS, FUEL INJECTION PUMP HOUSING (6076HH030, HH032, HH034, HH036).....	26 - 66	1D9	COOLANT CONDITIONER, ENGINE .....	25 - 2
3G4	CONNECTORS, HARNESS, UPPER (6076 ENGINE)....	40 - 110	2B24	COOLANT CONDITIONER, ENGINE .....	26 - 3
3G2	CONNECTORS, LOWER HARNESS FOR 6076 ENGINE .....	40 - 108	2D12	COOLANT HEATER, ENGINE .....	26 - 44
3F25	CONNECTORS, SUPPLEMENTARY TERMINALS .....	40 - 106	1C11	COOLANT HEATER, ENGINE BLOCK.....	20 - 18
6E5	CONSOLE GLOVE BOX AND ARM REST, R.H. ....	90 - 62	2G11	COOLANT RECOVERY TANK .....	30 - 20
3B24	CONSOLE PANEL, OVERHEAD.....	40 - 4	1D9	COOLANT SCAN TEST KIT .....	25 - 2
6G16	CONTOUR MASTER - FEEDER HOUSE FRAME, TILT BEAM & CLOSURE PLATES (660301- ).....	110 - 24	2B24	COOLANT SCAN TEST KIT .....	26 - 3
6H23	CONTOUR MASTER DRIVESHAFT .....	110 - 55A	2D4	COOLER AND OIL FILTER HOUSING (ESN 500000- ).....	26 - 34
6H21	CONTOUR MASTER DRIVESHAFT (660301- ) .....	110 - 54	1F5	COOLER, ENGINE OIL (EARLY DESIGN) (ESN -499999).....	25 - 50
5D5	CONTOUR MASTER HYDRAULIC HOSES, L.H SIDE (OPTIONAL) (660301- ) .....	70 - 34	2D4	COOLER, ENGINE OIL (ESN 500000- ) .....	26 - 34
6G20	CONTOUR MASTER LOCKOUT ADAPTER KIT (BELT PU & 4R CORN HEADS) (660301- ) .....	110 - 28	5C11	COOLER, OIL, FEEDER HOUSE .....	70 - 16
5E3	CONTOUR MASTER SOLENOID CONTROL RELIEF VALVE .....	70 - 58	9E18	COOLING FAN BELTS .....	170 - 3
5E15	CONTOUR MASTER SOLENOID CONTROL VALVE (660301- ) .....	70 - 72	7D7	CORN AND SMALL GRAIN CONCAVE INDICATOR ....	120 - 38
5F17	CONTOUR MASTER TILT CYLINDER (660301- ) .....	70 - 100	8G3	CORN CURTAIN AND DEFLECTORS .....	125 - 10
5F19	CONTOUR MASTER TILT CYLINDER HOSES AND FITTINGS (660301- ) .....	70 - 102	7C5	CORN CYLINDER DOOR (ARGENTINA ONLY) .....	120 - 12
3D11	CONTOUR MASTER WIRING HARNESS .....	40 - 44	5I5	CORNER SHEET, R H FRONT .....	80 - 40
3D13	CONTOUR MASTER WIRING HARNESS ADAPTER ....	40 - 46	5I7	CORNER SHEET, REAR, L H .....	80 - 42
6G14	CONTOUR MASTER, FEEDER HOUSE SHELL, WEAR PLATES AND SEALS (660301- ) .....	110 - 22	8D13	COUNTERSHAFT DRIVE, SECONDARY.....	121 - 44
6G18	CONTOUR MASTER, LOCKOUT ASSEMBLY (OPTIONAL) (660301- ) .....	110 - 26	9E1	COUNTERSHAFT DRIVE, UNLOADING AUGER .....	130 - 58
4B23	CONTROL CABLES, HYDROSTATIC DRIVE ( -645300) .....	50 - 4	8C13	COUNTERSHAFT GEARCASE, PRIMARY ( -640300) .....	121 - 20
			8C11	COUNTERSHAFT GEARCASE, PRIMARY (640301- ) .....	121 - 18
			8C9	COUNTERSHAFT, PRIMARY, GEARCASE ( -640300) .....	121 - 16
			8C15	COUNTERSHAFT, PRIMARY, GEARCASE (640301- ) .....	121 - 22
			1C10	COUPLING WITH HUB, ENGINE-TRANSMISSION.....	20 - 17
			1F9	COUPLING, INTAKE MANIFOLD (ESN -499999).....	25 - 54



## ALPHABETICAL INDEX - CONTINUED

GRID		PAGE	GRID		PAGE
9D24	COVER AND CHANNEL, CROSS AUGER .....	130 - 56	7B22	CYLINDER DOOR (LESS CYLINDER BAFFLE) .....	120 - 4
2F10	COVER STARTER SOLENOID (DENSO) .....	26 - 89	7C3	CYLINDER DOOR (656006- ) .....	120 - 10
7D11	COVER, BEATER .....	120 - 42	7C5	CYLINDER DOOR, CORN (ARGENTINA ONLY).....	120 - 12
5H1	COVER, ENGINE .....	80 - 12	8D11	CYLINDER DRIVE ADJUSTING BRACKET, DUAL-RANGE .....	121 - 42
5H3	COVER, ENGINE .....	80 - 14	8D1	CYLINDER DRIVE GEAR CASE, DUAL-RANGE.....	121 - 32
5H5	COVER, ENGINE .....	80 - 16	8D7	CYLINDER DRIVE INTERMEDIATE SHAFT MOUNTING, DUAL-RANGE .....	121 - 38
5H7	COVER, ENGINE .....	80 - 18	8D9	CYLINDER DRIVE INTERMEDIATE SHEAVE, DUAL-RANGE .....	121 - 40
4D3	COVER, HYDROSTATIC PUMP .....	50 - 32	8D5	CYLINDER DRIVE TIGHTENER, DUAL-RANGE .....	121 - 36
4D17	COVER, HYDROSTATIC PUMP .....	50 - 46	8C21	CYLINDER DRIVE, SINGLE RANGE .....	121 - 28
2C17	COVER, INJECTION PUMP ACCESS (ESN 500000- ).....	26 - 20	8C23	CYLINDER DRIVE, SLOW SPEED.....	121 - 30
1E5	COVER, INJECTION PUMP ACCESS (TH001,HH001,HH004)(ESN -499999) .....	25 - 25	1E10	CYLINDER HEAD (ESN -499999) .....	25 - 30
1E4	COVER, INJECTION PUMP ACCESS (HH003) (EARLY DESIGN) .....	25 - 24	2C20	CYLINDER HEAD (ESN 500000- ) .....	26 - 24
4E1	COVER, INNER .....	50 - 54	1E10	CYLINDER HEAD BOLTS (ESN -499999).....	25 - 30
4E5	COVER, QUILL AND BEARING (STEERABLE MOTOR).....	50 - 58	2C20	CYLINDER HEAD BOLTS (ESN 500000- ).....	26 - 24
1E12	COVER, ROCKER ARM .....	25 - 32	1E10	CYLINDER HEAD GASKET (ESN -499999) .....	25 - 30
2C23	COVER, ROCKER ARM (6076) .....	26 - 27	2C20	CYLINDER HEAD GASKET (ESN 500000- ) .....	26 - 24
1H1	COVER, STARTER SOLENOID (EARLY DESIGN) .....	25 - 101	1G18	CYLINDER HEAD GASKET KIT (ESN -499999).....	25 - 92
7B19	COVER, THRESHING CYLINDER .....	120 - 1	2F7	CYLINDER HEAD GASKET KIT (ESN 500000- ).....	26 - 86
2C17	COVER, TIMING GEAR (ESN 500000- ) .....	26 - 20	1D23	CYLINDER LINERS (ESN -499999).....	25 - 17
1E4	COVER, TIMING GEAR (HH003)(EARLY DESIGN) .....	25 - 24	2C12	CYLINDER LINERS (6076) .....	26 - 15
1E5	COVER, TIMING GEAR (TH001, HH001, HH004) (ESN -499999) .....	25 - 25	7C7	CYLINDER SHEAR BAR .....	120 - 14
7F9	CRANK, STRAW WALKER, STRAW SPREADER DRIVE AND SHIELD .....	120 - 86	5E8	CYLINDER SPEED AND REEL LIFT, SOLENOID CONTROL VALVE .....	70 - 64
1C13	CRANKCASE, ENGINE, OIL DRAIN.....	20 - 20	5E1	CYLINDER SPEED HYDRAULIC LINES AND HOSES ..	70 - 56
2C13	CRANKSHAFT (ESN 500000- ) .....	26 - 16	7C21	CYLINDER THRESHING, SPIKE TOOTH .....	120 - 28
1D24	CRANKSHAFT (HH001 OR HH004) (ESN -499999)(MKD RE53201) .....	25 - 18	4H5	CYLINDER, BRAKE SLAVE .....	60 - 18
1D25	CRANKSHAFT (HH003) (LATE DESIGN-STD HP) (ESN -499999)(MKD RE53203 OR RE42675).....	25 - 19	4H1	CYLINDER, BRAKE, MASTER .....	60 - 14
1D24	CRANKSHAFT (TH001 - EARLY DESIGN) (STD HP)(MKD RE53201).....	25 - 18	5F7	CYLINDER, DRIVE, GRAIN TANK UNLOADING.....	70 - 90
2F9	CRANKSHAFT DAMPER, NO PULLEY GROOVES .....	26 - 88	5D9	CYLINDER, HEADER LIFT, HYDRAULIC .....	70 - 39
1G20	CRANKSHAFT DAMPER, NO PULLEY GROOVES (EARLY DESIGN) .....	25 - 94	5D8	CYLINDER, HYDRAULIC, HEADER LIFT .....	70 - 38
2C17	CRANKSHAFT FRONT OIL SEAL (ESN 500000- ).....	26 - 20	5F5	CYLINDER, HYDRAULIC, UNLOADING AUGER SWING, LINES AND HOSES .....	70 - 88
1E5	CRANKSHAFT FRONT OIL SEAL (TH001,HH001,HH004)(ESN -499999) .....	25 - 25	4G21	CYLINDER, MASTER .....	60 - 10
1E4	CRANKSHAFT FRONT OIL SEAL (HH003) (EARLY DESIGN) .....	25 - 24	4H23	CYLINDER, STEERING (4-WHEEL DRIVE).....	60 - 36
9D20	CROSS AUGER BEARING PLATE, L.H. ....	130 - 52	7C9	CYLINDER, THRESHING, RASP BAR .....	120 - 16
9D24	CROSS AUGER COVERS AND CHANNEL.....	130 - 56	7C11	CYLINDER, THRESHING, RASP BAR .....	120 - 18
9D22	CROSS AUGER, GRAIN TANK .....	130 - 54	5F17	CYLINDER, TILT - CONTOUR MASTER (660301- ) .....	70 - 100
5G16	CROSS BRACE, SEPARATOR.....	80 - 2	5F19	CYLINDER, TILT, HOSES AND FITTINGS - CONTOUR MASTER (660301- ) .....	70 - 102
6E13	CUP HOLDER (660301- ) .....	90 - 70	5F9	CYLINDER, UNLOADING AUGER SWING HYDRAULIC ( -650300) .....	70 - 92
7C13	CURTAIN, BEATER GRATE (652179- ) .....	120 - 20	5F11	CYLINDER, UNLOADING AUGER SWING HYDRAULIC (650301-657573) .....	70 - 94
9C24	CURTAIN, GRAIN TANK .....	130 - 32	5F13	CYLINDER, UNLOADING AUGER SWING HYDRAULIC (657574- ) .....	70 - 96
8H13	CURTAIN, SEPARATOR ( -642457) .....	125 - 44			
8H15	CURTAIN, SPREADER (642458- ) .....	125 - 46			
5C8	CUTTING PLATFORM , 200 SERIES CONVERSION PARTS .....	70 - 13			
1D10	CYLINDER BLOCK (EARLY DESIGN (WITHOUT HEAD BOLTS) .....	25 - 4			
2C1	CYLINDER BLOCK FITTINGS (ESN 500000- ).....	26 - 4			
1D12	CYLINDER BLOCK FITTINGS (WITH HEAD BOLTS) .....	25 - 6			
7B19	CYLINDER COVER, THRESHING .....	120 - 1			
7C1	CYLINDER DOOR (CORN AND GRAIN) (650301-656005) .....	120 - 8			
7B24	CYLINDER DOOR (FOR CORN) ( -650300) .....	120 - 6			

## D

## ALPHABETICAL INDEX - CONTINUED

GRID		PAGE	GRID		PAGE
9F5	DECALS, SAFETY AND LOCATIONS .....	170 - 14	9C14	DRIVE IDLER, CLEAN GRAIN ELEVATOR .....	130 - 22
9F7	DECALS, SAFETY AND LOCATIONS - FRENCH.....	170 - 16	8C7	DRIVE SHAFT, GEARCASE AND PRIMARY COUNTERSHAFT .....	121 - 14
9F11	DECALS, SAFETY AND LOCATIONS - FRENCH.....	170 - 20	4C8	DRIVE SHAFTS .....	50 - 13
9F15	DECALS, SAFETY AND LOCATIONS - FRENCH.....	170 - 24	4C9	DRIVE SHAFTS .....	50 - 14
9F19	DECALS, SAFETY AND LOCATIONS - FRENCH.....	170 - 28	5H23	DRIVE SHIELD, R.H. REAR .....	80 - 34
9F23	DECALS, SAFETY AND LOCATIONS - FRENCH.....	170 - 32	6G8	DRIVE SHIELDS, CONTOUR MASTER FEEDER HOUSE (660301-661261) .....	110 - 16
9G16	DECALS, TOP .....	170 - 50	6G10	DRIVE SHIELDS, CONTOUR MASTER FEEDER HOUSE (661262- ) .....	110 - 18
8F20	DECK, SUPPORTS AND FINS, STRAW CHOPPER.....	125 - 2	6G6	DRIVE SHIELDS, SAFETY STOP, FEEDER HOUSE ....	110 - 14
8G3	DEFLECTORS AND CORN CURTAIN .....	125 - 10	8F1	DRIVE SHIELDS, STRAW CHOPPER (640301- ) .....	121 - 80
9E13	DIAL-A-MATIC ELECTRICAL HARNESS .....	160 - 4	9C14	DRIVE TIGHTENER, CLEAN GRAIN ELEVATOR .....	130 - 22
9E11	DIAL-A-MATIC HEADER HEIGHT CONTROL HYDRAULIC LINE AND VALVE BLOCK .....	160 - 2	8E11	DRIVE TIGHTENER, FEEDER HOUSE .....	121 - 66
9E12	DIAL-A-MATIC HEADER HEIGHT CONTROL VALVE BLOCK SOLENOID .....	160 - 3	6G4	DRIVE TIGHTENER, FIXED SPEED FEEDER HOUSE.....	110 - 12
5D11	DIAL-A-MATIC HEADER HEIGHT CONTROL, VALVE BLOCK SOLENOID .....	70 - 41	6G3	DRIVE TIGHTENER, VARIABLE SPEED .....	110 - 10
4C23	DIFFERENTIAL GEARS .....	50 - 28	4C3	DRIVE WHEELS .....	50 - 8
4C23	DIFFERENTIAL SHAFTS.....	50 - 28	4C4	DRIVE WHEELS, HIGH FLOATATION PLANETARY FINAL DRIVE .....	50 - 9
3B22	DIGITAL TACH CONNECTOR, WIRING HARNESS .....	40 - 2	8E13	DRIVE, BELT PICKUP / REEL PUMP MOUNTING SHEAVE .....	121 - 68
1D12	DIPSTICK TUBE .....	25 - 6	8E1	DRIVE, CLEANING FAN, SEPARATOR .....	121 - 56
1E8	DIPSTICK, ENGINE OIL (EARLY DESIGN) (ESN -499999).....	25 - 28	9E1	DRIVE, COUNTERSHAFT, UNLOADING AUGER.....	130 - 58
2C19	DIPSTICK, ENGINE OIL (ESN 500000- ) .....	26 - 22	9E18	DRIVE, CYLINDER INTERMEDIATE, BELTS .....	170 - 3
8G11	DISC AND DRIVE BELT, CHAFF SPREADER ( -650300) .....	125 - 18	9E18	DRIVE, CYLINDER, BELTS.....	170 - 3
8G13	DISC, CHAFF SPREADER (DUAL MOTOR) (650301- ) .....	125 - 20	8E9	DRIVE, FAN, SPEED CONTROL SHEAVE LINKAGE....	121 - 64
4D9	DISPLACEMENT CONTROL VALVE, HYDRO. DR. ....	50 - 38	8D15	DRIVE, GEARCASE, STRAW WALKER.....	121 - 46
3B22	DOMELIGHT, WIRING HARNESS .....	40 - 2	4D11	DRIVE, HYDROSTATIC MOTOR .....	50 - 40
6C3	DOOR LATCH, CAB .....	90 - 10	4D21	DRIVE, HYDROSTATIC MOTOR .....	50 - 50
6C5	DOOR, CAB AND GLASS.....	90 - 12	4F9	DRIVE, HYDROSTATIC OIL HOSES, UPPER.....	50 - 88
8G5	DOOR, CHOPPER STRAW.....	125 - 12	4F11	DRIVE, HYDROSTATIC OIL HOSES, UPPER (655301- ) .....	50 - 90
9B19	DOOR, CLEAN GRAIN LOWER AUGER .....	130 - 2	4E20	DRIVE, HYDROSTATIC, LOWER OIL LINES ( -655300) .....	50 - 74
519	DOOR, CORNER SHEET, LEFT - HAND FRONT.....	80 - 44	4E24	DRIVE, HYDROSTATIC, LOWER OIL LINES ( -655300) .....	50 - 78
7C1	DOOR, CYLINDER (CORN AND GRAIN) (650301-656005) .....	120 - 8	4F1	DRIVE, HYDROSTATIC, LOWER OIL LINES (FOUR WHEEL DRIVE) (655301- ) .....	50 - 80
7B24	DOOR, CYLINDER (FOR CORN) ( -650300) .....	120 - 6	4F3	DRIVE, HYDROSTATIC, LOWER OIL LINES (TWO WHEEL DRIVE) (655000- ) .....	50 - 82
7B22	DOOR, CYLINDER (LESS CYLINDER BAFFLE).....	120 - 4	5C15	DRIVE, REEL, HYD., FRONT LINES AND HOSES.....	70 - 20
7C3	DOOR, CYLINDER (656006- ).....	120 - 10	5B23	DRIVE, REEL, HYDRAULIC LINES AND HOSES, L.H. ....	70 - 4
7C5	DOOR, CYLINDER DOOR (ARGENTINA ONLY) .....	120 - 12	1B18	DRIVE, ROTARY SCREEN ( -645300) .....	20 - 1
5G20	DOOR, ENGINE ACCESS.....	80 - 6	8D13	DRIVE, SECONDARY COUNTERSHAFT.....	121 - 44
5G20	DOOR, RADIATOR .....	80 - 6	8E23	DRIVE, STRAW CHOPPER, SHIELDS ( -640300) .....	121 - 78
1B21	DOOR, ROTARY SCREEN ( -640300) .....	20 - 4	1C1	DRIVES, ENGINE FAN, 6076 .....	20 - 8
8G5	DOOR, STRAW CHOPPER.....	125 - 12	1C3	DRIVES, ENGINE FAN, 6076 .....	20 - 10
5E10	DOUBLE PILOTED, AUGER SWING, SOLENOID CONTROL VALVE ( -650300).....	70 - 66	8E15	DRIVES, STRAW CHOPPER (FRONT) .....	121 - 70
5E13	DOUBLE PILOTED, REEL FORE/AFT, SOLENOID CONTROL VALVE ( -650300) .....	70 - 70	8E19	DRIVES, STRAW CHOPPER, (REAR) .....	121 - 74
8G11	DRIVE BELT AND DISC, CHAFF SPREADER ( -650300) .....	125 - 18	8E17	DRIVES, STRAW CHOPPER, FINE CUT (FRONT) .....	121 - 72
9E3	DRIVE BELT GUIDE, UNLOADING AUGER .....	130 - 60	8E21	DRIVES, STRAW CHOPPER, FINE CUT (REAR).....	121 - 76
8H24	DRIVE BRACKET, TAILINGS .....	125 - 55	6H23	DRIVESHAFT, CONTOUR MASTER .....	110 - 55A
811	DRIVE CHAIN TIGHTENER, UPPER TAILINGS .....	125 - 57	6H21	DRIVESHAFT, CONTOUR MASTER (660301- ) .....	110 - 54
4B23	DRIVE CONTROL CABLES, HYDROSTATIC ( -645300) .....	50 - 4	4H3	DRUM, BRAKE.....	60 - 16
4C1	DRIVE CONTROL CABLES, HYDROSTATIC (645301- ) .....	50 - 6	6H3	DRUM, CHAIN AND FEEDER CONVEYOR IDLER SHAFT .....	110 - 36
2C13	DRIVE GEAR, OIL PUMP (ESN 500000- ) .....	26 - 16	3E13	DUAL LEVEL MONITOR .....	40 - 70
1D24	DRIVE GEAR, OIL PUMP (HH001 OR HH004) (ESN -499999)(MKD RE53201) .....	25 - 18	4C5	DUAL WHEELS, WIDE-SPACED (PLANETARY FINAL DRIVE) .....	50 - 10
1D25	DRIVE GEAR, OIL PUMP (HH003) (LATE DESIGN).....	25 - 19	8D11	DUAL-RANGE CYLINDER DRIVE ADJUSTING BRACKET.....	121 - 42
1D24	DRIVE GEAR, OIL PUMP(TH001 - EARLY DESIGN) (STD HP)(MKD RE53201) .....	25 - 18	8D1	DUAL-RANGE CYLINDER DRIVE GEAR CASE .....	121 - 32
8D17	DRIVE GEARCASE, STRAW WALKER .....	121 - 48			
1H3	DRIVE HOUSING, STARTER (ND) (NO. 028000-3292) (6076)(EARLY DESIGN).....	25 - 103			

**ALPHABETICAL INDEX - CONTINUED**

<i>GRID</i>		<i>PAGE</i>	<i>GRID</i>		<i>PAGE</i>
8D7	DUAL-RANGE CYLINDER DRIVE INTERMEDIATE SHAFT MOUNTING.....	121 - 38	2E1	ELECTRONIC FUEL INJECTION PUMP (6076HH030)(EARLY DESIGN).....	26 - 58
8D9	DUAL-RANGE CYLINDER DRIVE INTERMEDIATE SHEAVE.....	121 - 40	2E5	ELECTRONIC FUEL INJECTION PUMP (6076HH034) (ROBERT BOSCH).....	26 - 61A
8D5	DUAL-RANGE CYLINDER DRIVE TIGHTENER .....	121 - 36	2E9	ELECTRONIC FUEL INJECTION PUMP (RB) (6076HH031)(LATE DESIGN F.I.P.).....	26 - 64
8D3	DUAL-RANGE LOCKOUT ARM .....	121 - 34	2E11	ELECTRONIC FUEL INJECTION PUMP (RB) 6076HH035) (LATE DESIGN F.I.P.).....	26 - 65A
6D1	DUCTS, HEATER AND AIR CONDITIONING .....	90 - 33	3F15	ELECTRONIC MODULE, CENTRAL AND CIRCUIT BOARDS .....	40 - 96
6I5	DUST FAN BELT, LH SIDE FEEDER HOUSE-RETROFIT INSTALLATION.....	110 - 60	7E11	ELEMENT, CHAFFER .....	120 - 66
6I7	DUST FAN, LH SIDE FEEDER HOUSE-RETROFIT INSTALLATION.....	110 - 62	7E13	ELEMENT, CHAFFER .....	120 - 67A
	<b>E</b>		7E15	ELEMENT, CHAFFER EXTENSION .....	120 - 68
1G1	E.C.U. (HH001) (EARLY DESIGN ENGINE) .....	25 - 72	7E19	ELEMENT, SIEVE .....	120 - 72
1G5	E.C.U. (HH003) (LATE DESIGN STD. HP ENGINE) (ESN 149284-499999).....	25 - 76	9C14	ELEVATOR DRIVE IDLER, CLEAN GRAIN.....	130 - 22
2E3	E.C.U. (ROBERT BOSCH) (6076HH030) .....	26 - 60	9C14	ELEVATOR DRIVE TIGHTENER, CLEAN GRAIN.....	130 - 22
2E5	E.C.U. (ROBERT BOSCH) (6076HH034) .....	26 - 61A	9C16	ELEVATOR SHIELDS, UPPER CLEAN GRAIN ( -640603) .....	130 - 24
1G3	E.C.U. (TH001) (EARLY DESIGN STD. HP ENGINE).....	25 - 74	9C18	ELEVATOR SHIELDS, UPPER CLEAN GRAIN (640604- ).....	130 - 26
2E7	E.C.U. (6076HH031) (DENSO) (EARLY DESIGN F.I.P.) .....	26 - 62	9E18	ELEVATOR, CLEAN GRAIN BELTS.....	170 - 3
2E9	E.C.U. (6076HH031) (ROBERT BOSCH) (LATE DESIGN F.I.P.) .....	26 - 64	9B21	ELEVATOR, LOWER, CLEAN GRAIN .....	130 - 4
2E11	E.C.U. (6076HH035) (ROBERT BOSCH) (LATE DESIGN F.I.P.) .....	26 - 65A	9B23	ELEVATOR, LOWER, CLEAN GRAIN .....	130 - 6
2E1	ECU (6076HH030) (EARLY DESIGN) .....	26 - 58	9C1	ELEVATOR, UPPER CLEAN GRAIN .....	130 - 8
3F13	ECU, ELECTRONIC CONTROL UNIT .....	40 - 94	5G20	ENGINE ACCESS DOOR, HANDRAILS, AND RADIATOR DOOR.....	80 - 6
3E5	EITHER START SOLENOID, 6076 .....	40 - 62	5H9	ENGINE ACCESS PLATFORM AND STEP .....	80 - 20
3E7	EITHER START SOLENOID, 6076 .....	40 - 64	3D24	ENGINE AIR FILTER WARNING SWITCH.....	40 - 57
1F6	ELBOW, HEATER RETURN (EARLY DESIGN) (ESN -499999).....	25 - 51	3E23	ENGINE ALTERNATOR MOUNTING .....	40 - 80
3F19	ELECTRICAL CONNECTOR SERVICE KIT .....	40 - 100	3F11	ENGINE CIRCUIT BREAKERS .....	40 - 92
3F21	ELECTRICAL CONNECTOR SERVICE KIT .....	40 - 102	3F8	ENGINE CIRCUIT BREAKERS ( -660300) .....	40 - 89
9E13	ELECTRICAL HARNESS, DIAL-A-MATIC.....	160 - 4	3F9	ENGINE CIRCUIT BREAKERS (660301- ).....	40 - 90
3G1	ELECTRICAL SERVICE OUTLET.....	40 - 107	5H1	ENGINE COMPARTMENT ( -640300) .....	80 - 12
1G16	ELECTRICAL TERMINALS AND CONNECTORS, WEATHERPACK .....	25 - 90	5H3	ENGINE COMPARTMENT ( -640300) .....	80 - 14
3F17	ELECTRICAL TERMINALS AND CONNECTORS, WEATHERPACK .....	40 - 98	5H5	ENGINE COMPARTMENT (640301- ).....	80 - 16
2F5	ELECTRICAL TERMINALS AND CONNECTORS, WEATHERPACK (6076) .....	26 - 84	5H7	ENGINE COMPARTMENT (640301- ).....	80 - 18
8C17	ELECTROMAGNETIC HEADER CLUTCH .....	121 - 24	2D12	ENGINE COOLANT HEATER .....	26 - 44
2E3	ELECTRONIC CONTROL UNIT (6076HH030) (ROBERT BOSCH).....	26 - 60	9E17	ENGINE DRIVE BELTS.....	170 - 2
2E5	ELECTRONIC CONTROL UNIT (6076HH034) (ROBERT BOSCH).....	26 - 61A	1C3	ENGINE FAN DRIVES 6076 .....	20 - 10
3F13	ELECTRONIC CONTROL UNIT (ECU).....	40 - 94	1C1	ENGINE FAN DRIVES, 6076 .....	20 - 8
1G1	ELECTRONIC CONTROL UNIT (HH001) (EARLY DESIGN ENGINE).....	25 - 72	5G5	ENGINE GEARCASE OIL FILTER ASSEMBLY .....	70 - 112
1G5	ELECTRONIC CONTROL UNIT (HH003) (LATE DESIGN STD. HP ENGINE) (149284-499999) .....	25 - 76	5G7	ENGINE GEARCASE PRESSURE REGULATOR .....	70 - 114
1G3	ELECTRONIC CONTROL UNIT (TH001) (EARLY DESIGN STD. HP ENGINE).....	25 - 74	5G13	ENGINE GEARCASE SOLENOID VALVE (PRESSURE REGULATOR) .....	70 - 120
2E9	ELECTRONIC CONTROL UNIT (6076HH031) (RB) (LATE DESIGN F.I.P.) .....	26 - 64	8B24	ENGINE GEARCASE- SEPARATOR DRIVE WET- CLUTCH AND PUMP DRIVE SHAFT .....	121 - 6
2E11	ELECTRONIC CONTROL UNIT (6076HH035) (RB) (LATE DESIGN F.I.P.) .....	26 - 65A	8B20	ENGINE GEARCASE- STRAW CHOPPER, UNLOADING DRIVE AND SEPARATOR DRIVE GEAR .....	121 - 2
1G1	ELECTRONIC FUEL INJECTION PUMP (HH001) (EARLY DESIGN ENGINE) .....	25 - 72	8C3	ENGINE GEARCASE, SEPARATOR AND PUMP DRIVE .....	121 - 10
2E3	ELECTRONIC FUEL INJECTION PUMP (6076HH030) (ROBERT BOSCH).....	26 - 60	8C5	ENGINE GEARCASE, SEPARATOR AND PUMP DRIVE .....	121 - 12
			8C1	ENGINE GEARCASE, SEPARATOR DRIVE WET- CLUTCH AND PUMP DRIVE SHAFT .....	121 - 8
			8B22	ENGINE GEARCASE, STRAW CHOPPER, UNLOAD- ING DRIVE AND SEPARATOR DRIVE GEAR .....	121 - 4
			1C5	ENGINE INTERCOOLER.....	20 - 12
			1C7	ENGINE MOUNTS ( -640300).....	20 - 14
			1C8	ENGINE MOUNTS (640301-655524) .....	20 - 15
			1C9	ENGINE MOUNTS (655525- ).....	20 - 16
			1C7	ENGINE MOUNTS AND REAR SUPPORT ( -640300).....	20 - 14
			1C8	ENGINE MOUNTS AND REAR SUPPORT (640301-655524) .....	20 - 15
			1C9	ENGINE MOUNTS AND REAR SUPPORT (655525- ) .....	20 - 16
			1D8	ENGINE OIL (TORQ-GARD PLUS-50).....	25 - 1

**ALPHABETICAL INDEX - CONTINUED**

GRID		PAGE	GRID		PAGE
2B23	ENGINE OIL (TORQ-GARD PLUS-50) .....	26 - 1	2C9	EXPANDED ENGINE OVERHAUL KIT(S) (ESN 500000- ) .....	26 - 12
1F5	ENGINE OIL COOLER (EARLY DESIGN) (ESN -499999) .....	25 - 50	1D20	EXPANDED ENGINE OVERHAUL KITS (ESN -499999) .....	25 - 14
2D4	ENGINE OIL COOLER (ESN 500000- ) .....	26 - 34	6F16	EXPORT ONLY, CAB POST INSTRUMENT PANEL, LH.....	90 - 100
1E8	ENGINE OIL DIPSTICK (EARLY DESIGN) (ESN -499999) .....	25 - 28	4C11	EXPORT, TRANSMISSION ( -657284) .....	50 - 16
2C19	ENGINE OIL DIPSTICK (ESN 500000- ) .....	26 - 22	4C12	EXPORT, TRANSMISSION (657285- ) .....	50 - 17
2C19	ENGINE OIL DIPSTICK TUBE (ESN 500000- ) .....	26 - 22	1C11	EXTENSION CORD, ENGINE BLOCK COOLANT HEATER .....	20 - 18
1E8	ENGINE OIL DIPSTICK TUBE (EARLY DESIGN) (ESN -499999) .....	25 - 28	7E15	EXTENSION ELEMENT, CHAFFER .....	120 - 68
1E22	ENGINE OIL FILTER (ESN -499999) .....	25 - 42	9D1	EXTENSION, GRAIN TANK .....	130 - 34
2D4	ENGINE OIL FILTER (ESN 500000- ) .....	26 - 34		<b>F</b>	
3E5	ENGINE OIL PRESSURE SENDING UNIT .....	40 - 62	5H21	FAN DRIVE SHIELD, L.H. ....	80 - 32
3E7	ENGINE OIL PRESSURE SENDING UNIT .....	40 - 64	8E3	FAN DRIVE SPEED CONTROL LINKAGE ( -640300) .....	121 - 58
1E14	ENGINE OIL PUMP (EARLY DESIGN OIL PUMP) (ESN -499999) .....	25 - 34	8E5	FAN DRIVE SPEED CONTROL LINKAGE (640301-655300) .....	121 - 60
2D1	ENGINE OIL PUMP (ESN 500000- ) .....	26 - 30	8E7	FAN DRIVE SPEED CONTROL LINKAGE (655301- ) .....	121 - 62
1E16	ENGINE OIL PUMP (LATE DESIGN OIL PUMP) (ESN -499999) .....	25 - 36	8E9	FAN DRIVE SPEED CONTROL SHEAVE LINKAGE.....	121 - 64
2D3	ENGINE OIL PUMP INTAKE .....	26 - 32	1C3	FAN DRIVES, ENGINE, 6076 .....	20 - 10
1E18	ENGINE OIL PUMP INTAKE (REPLACEMENT) (USED WITH RE44118 OR RE60622) .....	25 - 38	3C21	FAN, AIR CONDITIONER PRESSURIZER KIT (640301-650300) .....	40 - 28
2C9	ENGINE OVERHAUL KIT(S) (ESN 500000- ) .....	26 - 12	6E20	FAN, AIR CONDITIONING & HEATER AND PRESSURIZING .....	90 - 78
1D20	ENGINE OVERHAUL KITS (ESN -499999) .....	25 - 14	7D19	FAN, CLEANING .....	120 - 50
3D24	ENGINE PLUGGED AIR FILTER WARNING SWITCH ..	40 - 57	7D21	FAN, CLEANING .....	120 - 52
5H1	ENGINE RAILS .....	80 - 12	9E19	FAN, CLEANING, BELTS .....	170 - 4
5H3	ENGINE RAILS .....	80 - 14	8E1	FAN, DRIVE, CLEANING, SEPARATOR .....	121 - 56
5H5	ENGINE RAILS .....	80 - 16	6I7	FAN, DUST, LH SIDE FEEDER HOUSE-RETROFIT INSTALLATION.....	110 - 62
5H7	ENGINE RAILS .....	80 - 18	1C1	FAN, 6076 ENGINE .....	20 - 8
1G18	ENGINE REBUILD GASKET KIT (ESN -499999) .....	25 - 92	6H7	FEED PLATE LATCH HANDLE .....	110 - 40
2F7	ENGINE REBUILD GASKET KIT (ESN 500000- ) .....	26 - 86	9E17	FEEDER CONVEYOR BELTS.....	170 - 2
1H5	ENGINE SPEED SENSOR (EARLY DESIGN) .....	25 - 105	6H4	FEEDER CONVEYOR BRACKET .....	110 - 37
2F14	ENGINE SPEED SENSOR (ESN-XXXXXX) .....	26 - 93	6H4	FEEDER CONVEYOR DRIVE CHAIN .....	110 - 37
3E3	ENGINE TACH SENSOR, 6076 .....	40 - 60	6H5	FEEDER CONVEYOR DRIVE CHAIN, TIGHTENER AND GUIDES.....	110 - 38
3E5	ENGINE TEMP SWITCH, 6076 .....	40 - 62	6I3	FEEDER CONVEYOR DRIVE CHAIN, TIGHTENER AND GUIDES-RETROFIT INATALLATION.....	110 - 58
3E7	ENGINE TEMP SWITCH, 6076 .....	40 - 64	6H4	FEEDER CONVEYOR IDLER .....	110 - 37
3E5	ENGINE TEMPERATURE SENDING UNIT .....	40 - 62	6H3	FEEDER CONVEYOR IDLER SHAFT, DRUM AND CHAIN .....	110 - 36
3E7	ENGINE TEMPERATURE SENDING UNIT .....	40 - 64	5C7	FEEDER HOUSE , HYD. HOSE, VARIABLE DRIVE.....	70 - 12
1D22	ENGINE UNDERHAUL KIT (STD BEARINGS) .....	25 - 16	3H3	FEEDER HOUSE BACKSHAFT SPEED SENSOR (645316- ) .....	40 - 134
2C11	ENGINE UNDERHAUL KIT (STD BRGS) (6076) .....	26 - 14	9E19	FEEDER HOUSE BELTS .....	170 - 4
3E5	ENGINE, LOWER HARNESS, 6076 .....	40 - 62	6G8	FEEDER HOUSE DRIVE SHIELDS - CONTOUR MASTER (660301-661261) .....	110 - 16
3E7	ENGINE, LOWER HARNESS, 6076 .....	40 - 64	6G10	FEEDER HOUSE DRIVE SHIELDS - CONTOUR MASTER (661262- ) .....	110 - 18
1C10	ENGINE, TRANSMISSION COUPLING WITH HUB.....	20 - 17	6G6	FEEDER HOUSE DRIVE SHIELDS AND SAFETY STOP .....	110 - 14
3E3	ENGINE, UPPER HARNESS, 6076 .....	40 - 60	8E11	FEEDER HOUSE DRIVE TIGHTENER.....	121 - 66
4H11	ETHER START BUTTON .....	60 - 24	6G4	FEEDER HOUSE DRIVE TIGHTENER (FIXED SPEED) .....	110 - 12
6E14	ETHER START BUTTON .....	90 - 72	6I5	FEEDER HOUSE DUST FAN BELT, LH SIDE - RETROFIT INSTALLATION .....	110 - 60
2F23	ETHER STARTING AID ( -657740) .....	30 - 8	6I7	FEEDER HOUSE DUST FAN, LH SIDE - RETROFIT INSTALLATION .....	110 - 62
2G1	ETHER STARTING AID (657740- ) .....	30 - 10	5C21	FEEDER HOUSE FITTINGS, HYDRAULIC, EXPORT....	70 - 26
2D20	ETHER STARTING FITTINGS (6076) .....	26 - 53	6H1	FEEDER HOUSE FLOOR .....	110 - 34
6E24	EVAPORATOR, AIR CONDITIONER ( -650300) R-12 .....	90 - 82	6G12	FEEDER HOUSE FRAME .....	110 - 20
6F1	EVAPORATOR, AIR CONDITIONER (650301- ) R134A .....	90 - 84			
6F12	EVAPORATOR, HEATER UNIT .....	90 - 96			
1F16	EXHAUST MANIFOLD .....	25 - 62			
2D19	EXHAUST MANIFOLD .....	26 - 52			
1F16	EXHAUST MANIFOLD GASKETS.....	25 - 62			
2D19	EXHAUST MANIFOLD GASKETS.....	26 - 52			
2G7	EXHAUST PIPE AND MUFFLER .....	30 - 16			
1E10	EXHAUST VALVE SHIELD (ESN -499999) .....	25 - 30			
2C20	EXHAUST VALVE SHIELD (ESN 500000- ) .....	26 - 24			
1E10	EXHAUST VALVES (ESN -499999) .....	25 - 30			
2C20	EXHAUST VALVES (ESN 500000- ) .....	26 - 24			